



QUALIFIER VIDEO SYSTEM 2.0

A new perspective on vehicle systems validation.

Customers, insurance providers, and government regulators now expect all vehicles to have some advanced driver assistance system (ADAS) features. But validating the performance of these advanced systems is extremely challenging — unless you have a tool that can show you everything that is happening in and around a vehicle.

Aptiv Connect Qualifier offers an optional video system that collects video whenever pre-configured events occur. It allows you to connect up to four cameras to your Aptiv EP-800, EP-1000, or EP-2000 vehicle data recorder (VDR). It then syncs video from all four cameras with graphs of the vehicle’s data signals and a GPS route map. As a result, you can see everything that’s happening on a single pane of glass.

The Aptiv video system is highly configurable. You choose from a wide variety of cameras and mounting systems suitable for interior and exterior use. You can also configure the video recording and data collection so that it captures what is happening for a pre-defined number of seconds before and after events of interest to you. No more fast-forwarding and rewinding to find the right place on the video feed. Aptiv Qualifier does the hard work for you so that the validation process becomes faster and easier than ever before.

For more information or to see a demo, contact your Aptiv representative or visit www.aptiv.com/connected-services.



BENEFITS

- **Save millions of dollars by quickly finding and fixing issues with advanced systems**
- **Shave months off warranty resolution time**
- **Improve vehicle quality by syncing video with signal graphs and route maps**

NEW IN VERSION 2.0

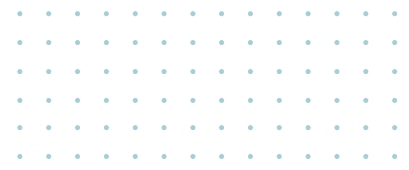
- **Faster frame rate:** The faster frame rate minimizes motion blur and allows you to sync the video more precisely with vehicle data signals.
- **New camera models:** The 2.0 system offers standard, fisheye, and varifocal sensors, and the new cameras have fully detachable cables, which makes installation easier.
- **Optional license plate and face blurring:** Meet your compliance requirements to protect bystanders' privacy.

VIDEO SYSTEM COMPONENTS

HARDWARE

- Aptiv EP-2000, EP-1000, or EP-800 vehicle data recorder (VDR)
- Axis F9114 Main Unit
- Up to 4 Axis video cameras (see page 3)
- SD card for video storage
- Power supply, mounting hardware, and cabling as needed

Your power supply, mounting hardware, and cabling needs will depend on the details of your deployment. Aptiv will provide the necessary components to meet your needs.



AXIS F9114 MAIN UNIT



APTIV EP-2000



APTIV EP-800



APTIV EP-1000



CAMERA OPTIONS



AXIS F2105-RE STANDARD SENSOR

- Interior or exterior use
- 108° horizontal field of view
- Good low-light performance in color
- Ruggedized design for temperatures -40° C to 70° C
- SMA-FAKRA cables to withstand vibration



AXIS F2135-RE FISHEYE SENSOR

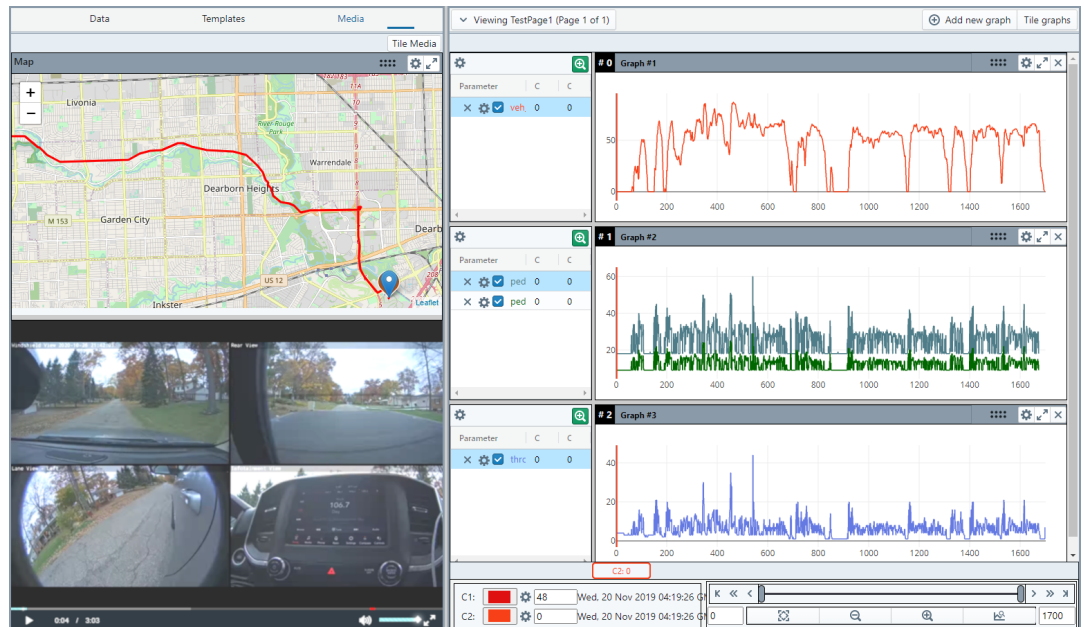
- Interior or exterior use
- 185° horizontal field of view
- Good low-light performance in color
- Ruggedized design for temperatures -40° C to 70° C
- SMA-FAKRA cables to withstand vibration




AXIS F2115-R VARIFOCAI SENSOR

- Interior use only
- 107°–56° horizontal field of view
- Good low-light performance in color
- Ruggedized design for temperatures -40° C to 60° C
- Focal length 3.2 mm to 5.7 mm

Aptiv Connect Qualifier syncs video with vehicle data signals and a route map to make troubleshooting advanced systems faster than ever before.





 FEATURES	BENEFITS
Video System	
Connect up to 4 cameras	Validate ADAS and other features that require multiple, simultaneous views inside and outside the vehicle
Capture 1080p video at up to 30 frames per second or 720p video at up to 60 frames per second	Precisely sync your video feed with the data signals coming from the vehicle for accurate issue diagnosis
Select from a variety of cameras with different field-of-view capabilities and interior and exterior mounting	Tailor the video system so that it can help you solve your team's unique challenges
Integration	
Use the APS-1 power supply or connect directly to the vehicle	Enable VDR wake/sleep strategy to handle video system power needs without draining vehicle battery
Remotely configure the camera system to record desired events, as well as vehicle data signals	Easily update your video recording strategy as your needs change
Define how long you want to capture video before and after an event	Simplify troubleshooting by recording the right amount of video footage
Qualifier Software	
License plate and face blurring	Meet your compliance requirements to protect bystanders' privacy
Sync video with data signals and GPS map	See at a glance everything that was happening with a vehicle at a particular point in time
View video from up to four cameras on a single screen	Find the root cause of issues quickly
Tailor your video capture for each event and each user	Customize the solution so that it meets your validation needs

THE QUALIFIER ADAS SOLUTION

Video is part of the [Aptiv Connect Qualifier ADAS Solution](#). This collection of hardware, software, and services can reduce the time and effort involved in ADAS validation, while also improving vehicle quality and reducing warranty expenses and development costs. Built on top of Aptiv Connect Qualifier, the complete ADAS Solution includes

- Qualifier Video System with up to four cameras
- [Qualifier Analytics](#) with a special dashboard for tracking ADAS KPIs
- [Environmental Insights](#), which includes road and weather data
- [Command Center](#) for a live streaming view of vehicle location and health
- Data transmission and support

ABOUT APTIV

Aptiv is a global technology company that develops safer, greener, and more connected solutions enabling a more sustainable future of mobility.

[Visit aptiv.com](http://aptiv.com)

